

Winter Classic



ESME e.V.

Winter Concert

December 4, 2011

4:00 pm

Schloss Nymphenburg

Finanzberatung, wann und wo Sie wollen.

Werden Sie finanziell erfolgreicher mit einer flexiblen Finanzberatung.

Als selbstständiger Finanzberater für die Deutsche Bank Privat- und Geschäftskunden AG steht Ihnen Allan S. Holm mit seinem Wissen und seiner Erfahrung zur Seite. Er kann die Expertise der Deutschen Bank über die weltweiten Märkte und Wirtschaftszyklen für Sie nutzbar machen und mit Ihren Erwartungen, Bedürfnissen und Wünschen kombinieren.

Gemeinsam mit Ihnen entwickelt er persönliche Lösungen, die Sie finanziell erfolgreicher machen, z.B. in den Bereichen Geldanlage, Finanzierung, Vorsorge und Absicherung.

Am besten, Sie überzeugen sich selbst. Vereinbaren Sie dazu einfach einen Beratungstermin mit ihm.

Allan S. Holm freut sich auf Ihren Besuch. Auf Wunsch steht er Ihnen auch in den Abendstunden und am Wochenende zur Verfügung, gern auch bei Ihnen zu Hause.

Ein Anruf zur Terminvereinbarung genügt.

Allan S. Holm, Selbstständiger Finanzberater

Mobil 01 79/5 01 77 99

allan.holm@db.com

Kontakt außerdem über:

Investment & FinanzCenter München-Riesentfeldstraße
Bertholdstraße 22, 80809 München

Telefon (089) 35 71 93-31

Nutzen Sie jetzt eine flexible
Finanzberatung!

Leistung aus Leidenschaft.

Deutsche Bank



Program

| | |
|--|---|
| Zadok the Priest, Coronation Anthem No. 1, HWV258 | George Frideric Handel (1685-1759) Arranged by Mark Davey |
| Gaudete from Piaie Cantionis | Published in 1582 and composed during the 16th century |
| Overtur der Zauberflöte, K620 | Wolfgang Amadeus Mozart (1756-1791) Arranged by Mark Davey |
| A La Nanita Nana | Arranged by Franz Wasner composed during the 18th century |
| Lullabye | Words and Music by Billy Joel (b. 1949) Arranged by Philip Lawson |
| Oye! Que! Pasa! | Victor López |
| Girl from Ipanema | Music by Antonio Carlos Jobim (1927-1994) English words by Norman Gimbel Original words by Vinicius de Moraes Arranged by Mark Taylor Adapted for ESME Singers and Big Band by Mark Davey |
| Watermelon Man | Herbie Hancock (b. 1940) Arranged by Jerry Nowak |

-20 Minute Intermission-

| | |
|--|--|
| The Jungle Book | Robert Sherman (b. 1925) and Richard Sherman (b. 1928) Arranged by John Glenesk Mortimer |
| Iona | Edmund Walters (b. 1931) Poem by Peter Kennerley |
| I Got a Robe | Arranged by Roderick Williams (b. 1965) |
| Batman | Danny Elfman (b. 1953) Arranged by Peter King |
| Snow Flakes | Thanatip Viturawong (b. 1986) Poem by Henry Wadsworth Longfellow |
| West Side Story "Selection for Orchestra" | Leonard Bernstein (1918-1990) Arranged by Jack Mason |

ESME e.V.

English-Speaking Music Ensembles (ESME) e.V.

ESME e.V. is a non-profit organization dedicated to establishing and promoting English-speaking music ensembles in Munich. In just three years, we have grown into an organization with over 100 members and three established ensembles. Our musicians come from a wide array of places and professional backgrounds, many of us from English-speaking countries around the world. For more information, please visit our website at **www.esme-ev.de**.

We welcome English-speaking amateur instrumentalists, singers, composers and conductors. We seek new performance and rehearsal venues, and musical scores for our library. If you can help with any of these, please contact us at **info@tt-orchestra.de** and visit us at **www.esme-ev.de**.

We hope you enjoy the show!

Mark Davey, *Principle Conductor*

In addition to playing clarinet, piano, and tenor saxophone, Mark has founded and led numerous ensembles. His interest in both music and technology led him to the broadcast industry where he designed audio systems - including the first multi-channel voice-over IP broadcast communications system - before moving on to High Definition video processing at Sony Broadcast in 2000. Since returning to Munich in 2007, Mark has revived his musical interests with ESME e.V. He lives with his extremely patient and understanding partner Belinda.

Jennifer Connelly, *Conductor*

Lucky enough to have parents who always fostered a love of music, Jen began singing seriously with the Wesleyan Collegium under Dr. Jane Alden, finding challenge and respite in music while pursuing her master's degree. She joined the TT Singers at their inaugural concert in 2008. Jen has continued singing and dabbling in conducting and is now completing her PhD in astrophysics. She is grateful for the unique opportunity to lead the TT Singers, and wishes to thank them profusely for all their patience and enthusiasm!

Daniel Wytrykus, *Conductor*

Playing the violin since the age of 10, Daniel has been part of various music ensembles until he found his way to the TT Orchestra. Besides his daily job in the IT consulting industry, he's now starting to engage in new musical adventures, today conducting on his own for the first time. Daniel would like to thank the orchestra and ESME for these exciting opportunities and their support.

Composer & Soloists

Tar Viturawong **Composer & Conductor**

From Thailand originally, Tar is currently doing his graduate studies in biochemistry here in Munich. He has written music for solo piano, choirs, orchestras, and songs as well as incidental music for stage productions. His primary musical focus is now in piano composition, with his third piano album *Nox* currently in progress. He would like to thank the ESME committee for the opportunity to perform his composition tonight, and the choir and orchestra for their support.

Sarah Mulloy **Soprano Soloist**

Sarah Mulloy is pleased to perform in her third concert with the TT Singers. A lyric soprano, she grew up in Kansas City, Missouri, participating in musicals from age six on. She learned classical vocal technique at the University of Missouri - Kansas City and currently lives in Regensburg, Germany.

Emily Tuffley **Mezzo-soprano Soloist**

Emily first sang with the Junior Youth and Youth Choirs of Christchurch, New Zealand. After a break from singing, a move half way around the world, she joined the TT Singers in May, 2009. She has enjoyed a return to music and is excited to be singing in Schloß Nymphenburg today. Emily is looking forward to making the palace rock!

Mike Flowerdew **Baritone Soloist**

Mike found the TT Singers after moving to Munich from the UK to begin postdoctoral work in particle physics. He has enjoyed singing from a young age, performing mostly classical works with groups in Bristol, Oxford, Liverpool and Geneva. He would like to thank his lovely wife for her support and love, together with everyone who has made this concert possible.



Photo: David Freer, david.freer@web.de



Photo: Daniel Plappert



Photo: Roger Murphy

TT Singers



Photo: Roger Murphy

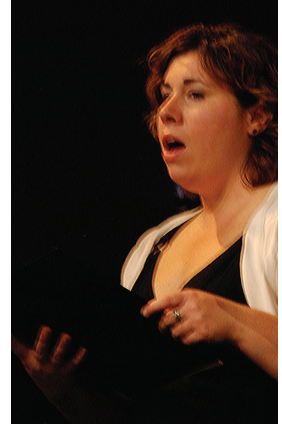


Photo: David Freer

Soprano

Jennifer Connelly
Gabriele Divanis*
Ruth Egeressy
Diana Engesser*
Diana Gross
Margaret Handel
Sonsoles Hernanz
Christiane Hohlfeld*
Mercedes Hoss-Weis*
Jennifer McPherson*
Sarah Mulloy
Irene Nealon-Meinzolt
Melanie Osinski
Heidrun Petra
Sabine Pröllochs

Alto

Sophie Armanini*
Jolanta Barszczewska-
Godenir
Carolyn Black*
Jacqueline Bornfleth*
Monika Brandstätter
Emily Burnell Petrou
Laura Carlson*
Gretel Classeu*
Claire Conroy*
Kate D. Smith
Ursula Dinse*
Daniela Dommel
Sandra Dunn
Silva Helmer
Daniela Herz
Claire Macht*
Heather McLarney*
Leonie Mönkemeyer
Brigitte Odenwald
Heather Spencer
Zsuzsanna Tatár
Emily Tuffley
Helen Wendl
Anh Thu Tieu*

Tenor

James Aslaksen*
Linda Behrens*
Rochelle D'Souza
Marion Hoffmann
Marilyn Hölzemann
Renate Mehringer
Manuela Osinski
Daniel Plappert*
Eric Weddle*

Bass

Julian Boyfield
Orlando de Lange
Mike Flowerdew
Mark Gilbert-Smith*
Simon Goodall*
Greg Icceton*
Alistair McPherson
Dan Roccapiore*
Tar Viturawong

Piano

Genevieve Holmes

* Unable to attend this evening

TT Orchestra



Photo: Roger Murphy



Photo: Roger Murphy



Photo: David Freer

Violin

Nicole Atchison*
Christian Brandel
Jean Carwana
Sybille Fischer*
Dagmar Jasinowski
Wendy MacLeod
Laura Morris
Jane Osbeldiston
Johanna Richter-Hoffmann*
Katy Schreiber
Daniel Wytrykus
Corrine Zeller

Viola

Kirstie Priestley
Heather Spencer
Mark Westcott

Cello

Richard Bromham*
Alexandra Buchanan*
László Csomor
Kathrin Kieseles*
Barthélemy Pecquet
Bettina Witzig*

Double Bass

Frederick Ferré
Mark Hammond*
Jonathan Harclerode

Flute

Béatrice Iso
Julia Priestley
Barbara Wagner
Isabel Zydun

Oboe

Alexandra Cross

Clarinet

Orla Duffner
Pierre-Henri Girard
Maximilian Messelken
Rachel Senior

Bass Clarinet

Susan Hinton

Bassoon

Julian Boyfield
Freeke van de Voort*

Soprano Saxophone

Naomi Janssen

Alto Saxophone

Michael Mosch*

Tenor Saxophone

Esther Gilvray*
Tanya Potoreyko
Harald Bornfleth

Baritone Saxophone

David Anderson

Trumpet

David Freer
Ziad Ganim
Cheryl Hayes
Angela Teevin-Schweiss*
Christoph Wieser

French Horn

Gail Craig

Trombone

Simon Billson*
Brian Eve*
Franz Pastorius
Chris Roth

Euphonium

Phil Emery*

Timpani

Guy Benson

Percussion

Guy Benson
Kristin Fehlauer
Ingo Scheuse*
Tar Viturawong

Piano

Genevieve Holmes

TT Big Band



Photo: David Freer, david.freer@web.de

Alto Saxophone

Emily Garrett
Richard Schmidt
Matthew Staples*

Tenor Saxophone

Esther Gilvray*
Rudolf Neuhaus
Tanya Potoreyko
Andrea Proß

Baritone Saxophone

David Anderson

Trumpet

David Freer
Ziad Ganim
Cheryl Hayes
Angela Teevin-Schweiss*
Cristoph Wieser

Trombone

Brian Eve*
Franz Pastorius
Chris Roth
Erwin Schmid*

Guitar

Cristiano Germani

Bass Guitar

Arno Euteneuer

Percussion

Guy Benson

Piano

Mark Davey

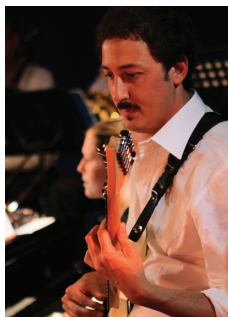


Photo: Roger Murphy



Photo: David Freer, david.freer@web.de



Photo: David Freer

Program Notes

Welcome back to another season with ESME e.V.! Tonight, we present a variety of music from the coronation of kings to the silver screen. The first selection in our program was written by Frederick Handel in 1727 and is wonderfully appropriate given tonight's venue. ***Zadok the Priest*** was composed for the coronation of King George II of Great Britain and Ireland and has been performed at every British coronation since then. Listen for the dance-like rhythms in the middle section which perfectly capture the excitement of this regal event.

Next in our program is a Christmas carol that was composed sometime during the 16th century. ***Gaudete*** comes from a book of Finnish/Swedish sacred songs called *Piae Cantionis*, published in 1582. The tempo and Latin text emphasize and express the jubilation present at the birth of Christ.

Wolfgang Amadeus Mozart's ***Overtur der Zauberflöte*** was written in 1791 and was well received at the time. *The Magic Flute* is the story of two lovers who are forced to survive magical ordeals before they can unite. When listening to this exciting introduction to Mozart's final opera - premiered just three months before his death - it is easy to see how his music has transcended time and influenced such artists as Ludwig van Beethoven in his *Fidelio*. We are performing this work on the eve of Mozart's death on December 5, 1791.

A La Nanita Nana and ***Lullabye*** are both lullabies. The former is a carol that was originally sung in honor of the baby Jesus at Christmas but has since become a popular bedtime song throughout the hispanic world. Tonight's version of Billy Joel's *Lullabye* was made popular by *The King's Singers*. The reflective, almost melancholy text is beautifully coupled with alternating major and minor keys.

To close our first half, we welcome back our *TT Big Band* for three numbers: ***Oye! Que! Pasa!***, ***Girl from Ipanema*** and ***Watermelon Man***. *Oye! Que! Pasa!* was written by Victor López, a composer and arranger. Interestingly, in

Program Notes

addition to publishing over 450 works, López is also a founding board member of “a non-profit organization that oversees all of the music activities in the State of Florida.” Antonio Carlos Jobim composed *Girl from Ipanema* in 1962. It instantly became a huge success and later won a *Grammy for Record of the Year* in 1965. *Watermelon Man* was first released on Herbie Hancock’s album *Takin’ Off* and is considered a standard in jazz repertoire.

In addition to composing *The Jungle Book* songs, the Sherman brothers also composed the songs for *Mary Poppins*, *Chitty Chitty Bang Bang*, *Bedknobs and Broomsticks* and *The Aristocats* as well as the famous tune *It’s a Small World (after all)* among countless others. The song *The Bare Necessities*, which you will hear in tonight’s performance, was nominated for “Best Song” at the 40th Academy Awards.

Iona is a small island off the west coast of Scotland in the Inner Hebrides and was home to St. Columba and his followers for 200 years before it was conquered by Norsemen. The island is now a popular tourist destination thanks to its rugged and breathtaking beauty. Walters sets the music to the poetry of Peter Kennerly and “invokes Christ’s blessing on the ancient island of Iona.”

Though the original composer of *I Got a Robe* is unknown, this spiritual has been widely performed. The famous African American contralto Marion Anderson referred to this song as “Heav’n, Heav’n” when she sang it in venues around the world. Tonight you will hear Roderick Williams’ arrangement of one of the few examples of protest that has survived in spiritual repertoire.

Danny Elfman’s *Batman* was composed for Tim Burton’s 1989 film of the same name. The main theme in Elfman’s score captures the duality of Bruce Wayne’s character perfectly with its four-note minor key ascent and two-note major key descent. Elfman’s score was so effective that it managed to convince the producers to abandon the idea that the film music could be comprised entirely of music by pop stars (only Prince remained). It also

Program Notes

introduced the composer and his “whimsically tragic music” to the masses. Just as John Williams “is universally recognized as the musical voice of *Superman*, Elfman has cemented himself...as the same for *Batman*.” We are performing an abridged version of this Grammy Award winning music.

Tonight we premiere a piece by one of our own singers: Tar Viturawong. ***Snow Flakes*** was composed in July, 2011 and is dedicated to the TT Singers and Orchestra. The piece contains elements drawn from one of Viturawong’s pre-existing piano compositions entitled *Snow Fantasia*, film music, and classical romanticism. Application of string tremolos, dazzling piano accompaniment, a cappella choral passages, and dissonance paint a portrait of the intensity, brilliance and sorrow of winter. The piece opens with “the snowfall motif”, namely, piano chords that mimic falling snow. Various other motifs are introduced as the piece progresses, allowing for development and expression of the text in the music (word painting). A perfect example of this is when Viturawong sets the lines “Silent, and soft and slow / Descends the snow.” Here, in the “refrain” motif, we hear a cappella voices descending together, just as the snow does in the text and the soft dynamics indicated in the score serve to accentuate the volume - or lack thereof - of snowfall. Viturawong’s setting of Longfellow’s poem is both striking and poignant, managing to capture both the “divine expression” and “the secret of despair” in Longfellow’s winter. Listen for yourself as “out of the bosom of the Air” Viturawong’s music descends like snow.

We end tonight’s program with a classic. Leonard Bernstein’s ***West Side Story*** was composed in 1957 for the musical which was released on film in 1961. According to Grove Music Online, a number of “musical subtleties play their part in the richness of *West Side Story*, ... [and] while it has weak points... these matter little compared with the effect of the work in almost any capable performance, its emotional power deriving from a truly operatic fusion of musical and dramatic impulses.” Tonight you will hear selections from this masterwork.

Special Thanks

We would like to thank the following for their contributions:

The ESME Board - Jonathan Harclerode, Heather Spencer,
Laura Morris, Mark Davey, Genevieve Holmes
Laura Morris for leading string sectionals
Sonsoles Hernanz, Emily Tuffley and Orlando de Lange
for party planning
Sandra Jäger of Schlosswirtschaft Schwaige for catering
Herbert Vogel from Klavierhaus Vogel for the piano
Wolfgang Renner of Allpower Veranstaltungsservice GmbH
Christian and Herbert Lehmler from the Bavaria Musikstudios
Christl Karnehm from the KreativGarage
Ilse Sixt from the Freies Musikzentrum
Oguz Lüle from the Kulturzentrum Haidhausen
Eckard Heintz and Malta Jensen of the Institut für
Internationales Kulturmanagement (INK) GmbH
Freistaat Bayern and Schloss Nymphenburg
for the beautiful hall
Andreas Regler from SchlagZu for the percussion
Daniel Plappert for leading video and
sound recording of this concert
Genevieve Holmes for the concert program and notes
Adriana Hernandez for her assistance in producing the program
Ruth Harris for contributions to PR and communications
Allan Holm from Deutsche Bank

And **you** for your support tonight!

Sponsors

Allan S. Holm
Freelance Financial Advisor
Deutsche Bank
+49(89)357193-31
allan.holm@db.com



www.esme-ev.de